

KENSRI SCHOOL & COLLEGE



DAILY

FUN MOVERS & SHAKERS

PROFESSIONAL COLLEGE



**Your Child's ambition is our passion..
You will not find us wanting.**

B.COM

B.B.A

B.A.

(HEP / HES / HEJ)

SCHOLAR

ATHLETE

ARTIST

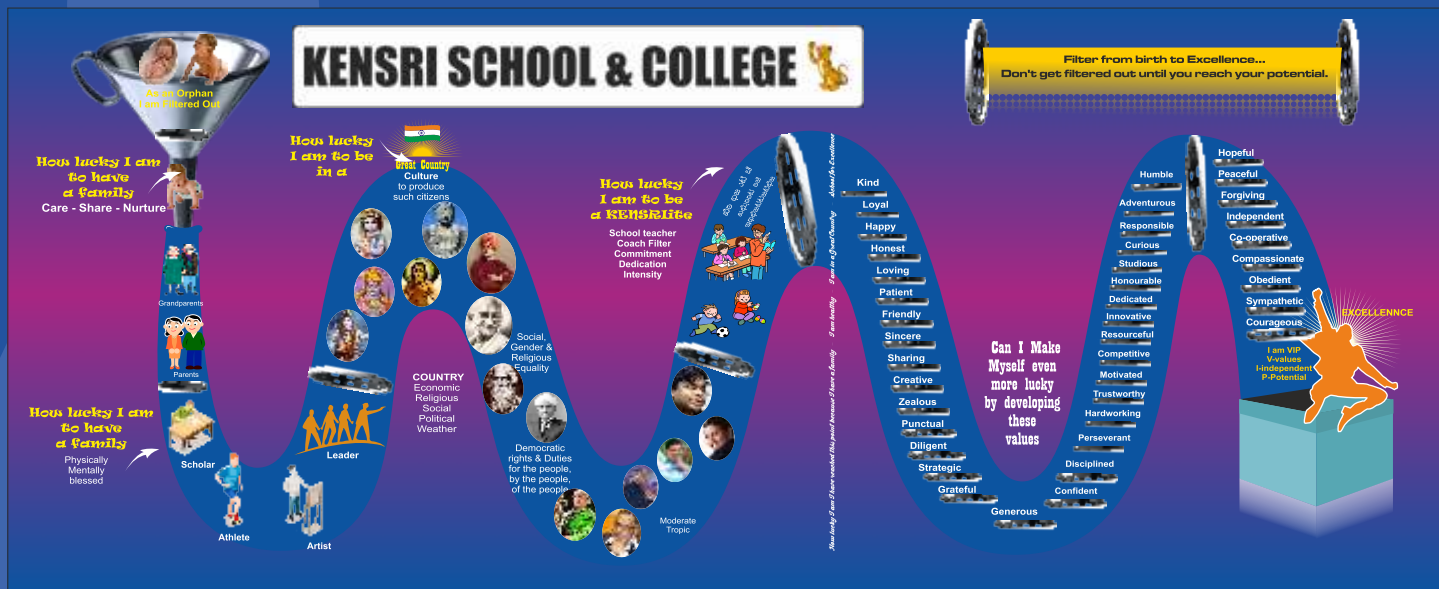
LEADER

**GIVING BACK MORE THAN YOU GET
DAILY EXCELLENCE**

DID YOU MAKE A CHOICE OR CHOICE MADE YOU

Mission: KENSRI is an educational institution for holistic development and excellence for global competition.

HAVE YOU TAKEN TO REALIZE - HOW LUCKY YOU ARE!!



Parents partnership

GURU SHISHYA PARAMPARA

TEACHER STUDENT PARTNERSHIP

The role of a parent is **CRUCIAL** in the partnership

- Habits and attitude
- Teachers depend on or expect right attitude and habits before they come to school each day.
- Habits include their habits and gunas. Let's make gunas into their character. Let this become a family and school culture.
- Daily RAP (Review Apply Prepare) makes your child participate and eager to come to class. Participation in class is the best rubric. Child participation helps teacher to know how much the student has learned. Let's make this a habit, it reduces stress.. The teachers had made sure by age by class they have carried rapport building lesson plans
- PLUS - Plus is a counselling session to parents to expect to see which rewards are useful to get best out of them and what dysfunctional behaviour you can expect at that age. Be aware of the steps that the school would have to take if your child crosses the threshold of poor behaviour. Sometimes it reflects parenting.
- SMP - SMP (Student mapping program) is a very deliberate effort with digitized files of your child's progress. Please become aware of it and understand the tools that you can use to partner the teacher. Reports from subject teachers and coaches are all brought in. Help the teachers update the student portfolio diligently and regularly each year so that you learn about your child and teachers can know about their students. All this resides in the cloud including medical and dental. Please update the medical and dental detail whenever your child visits the doctor.
- Annual calendar - Annual calendar is an important partnership tool to know when we are showcasing your children and possibly giving award or recognition. We need your help and support in getting best out of the students.
- Please make sure of making an appointment with the first point of contact Student Development Specialist (SDS) Please remember that SDS is the person that keeps the SMP file up to date.
- **OUTCOME - GIVING BACK MORE THAN YOU GET.**

Why KENSRI is different?

- Ethical values
- Explore & realize your passion with the widest array of diverse subjects.
- Helps you develop wisdom through application
- Train you for highest leadership levels of excellence in all fields.
- Tutored & mentored by highly experienced and dedicated faculty.
- Provide world class sports facilities.
- Develop your personality with creative expression
- Motivate with academic-sports-art-leadership- scholarships.
- We have industry/administration interaction.
- We help you develop an edge, prior to graduation



COUNCIL

COMPETITION

- Fashion show
- Cooking
- Debate
- Pick and speak
- Hair styling
- Poetry in park
- Photography and film making
- Spot painting
- Pe



MOVERS

BECOME A
REALIZE YOUR FULL POTENTIAL
BY BEING
ETHICAL

SELF STARTER-LEADER-MOTIVATED
ACCOUNTABLE-RESPONSIBLE-MATURE
ENERGETIC-PASSIONATE-RESULT ORIENTED
FOCUSED GOAL ORIENTED-INTENSE
TEAM PLAYER- TRUSTWORTHY - COMMITTED
ALL OF THESE ARE HABITS THAT WILL BE HONED.

KENSRI CURRICULUM INCLUDES PROGRAMS TO PRACTICE THE ABOVE

SHAKERS

KENSRI CURRICULUM INCLUDES PROGRAMS
STUDYING THE INDUSTRY.
STRATEGIZING FOR THE FUTURE
PREPARING FOR COMPETITION
SOUGHT BY THE CLIENTS, CUSTOMERS AND INDUSTRY

FUN MOVERS AND SHAKERS

Making the right decision that have a profound impact on your career and life. We call our programs Fun Movers and Shakers. The fun is to make sure that you choose a profession where you cannot wait for the day to start to take your work forward.

Shaker is a person one who has been in the industry who have taught about how the industry will change in next few years to prepare oneself to help the organisation to adapt to these changes.

Success in your career measured by ethics, productivity and leadership wlong with daily excellence an individual will be developed to excel daily.

Every student will be focused on excellent work ethics not allowing distractions to enter into his /her work place and focused on ability to work with process good, out put goal, outcome goal.

KENSRI program gives you additional certifications exposures to trade and commerce and visibility and also provides use of sports, art, digital world to make you team member and to be popular (standout)

You academic progoram includes proper understanding by being a daily diligent student to score marks and curriculum helps in being creative orally, written and digital. You have access to sports clubs and art clubs.



SCHOLARSHIP

The KENSRI Trust, epitomizing the philosophy of its visionary leader, Founder-President, Mr. Srish Kumar, the man who is rooted in Indian values and fundamentals, yet global in vision offers scholarships to the students par excellence in Sports, Fine arts and Academics. Scholarships are a medium to nurture the culture where success does not come in the way of the need to continue learning afresh, to keep innovating, to keep experimenting, transcending the conventional barriers of education, to create leaders and personalities, and to encourage them to achieve national and international accolades.

- Students who are placed in the Top 5 in the National list in their chosen field of excellence will receive 95 to 100 % tuition fee waiver.
- Students who are placed in the Top 5 in the state list in their chosen field of excellence will receive 75 % tuition fee waiver.
- Students who are from the rural background and belong to schedule castes and schedule tribes are eligible to avail tuition fee waiver up to 75% if they have an excellent and consistent academic record and extracurricular achievements.



Early application enrollment for the undergraduate degree courses for academic year has started. Please submit your detailed resume along with a copy of all your certificates and accomplishments to the College office by March 30th every year, to avail the seat and scholarships.

COMPLIANCE WITH NEW EDUCATION POLICY

- Prepare yourself to compete globally.
- Discover your real interest - Any combination.
- Counseling session - Group and Personalized.
- Like an American university, we have opportunities for you take lots and lots of combinations
- Esteemed educational institution with exceptional results for the past 20 years.
- Personalised programs & systems to fulfill your dreams & bring out the best in you.
- LOTS off add on courses & competitive certifications GMAT, GRE, UPSC, CA, NDA, etc to give you the edge.

ATHLETE

Wellness to Olympics

We are very proud that our sports system has not only helped children reach International levels but also helped students to reach NDA fitness levels and more. Let your child inculcate a daily recreation and fun with KENSRI WELLNESS. Wellness is with yoga, pranayama and meditation.

- (a) Team sports
 - (i) Athletics
 - (ii) Cricket
 - (iii) Basket ball
 - (iv) Soccer
 - (v) Volleyball
 - (vi) Yoga
- (b) Individual sports
 - (i) Badminton
 - (ii) Tennis
 - (iii) Swimming

Note: Fees differs for individual and team sports.

Senior Secondary

Daily Child

ARTIST

Creativity at its best-Art Refines

KENSRI is probably the only system in the world that has a deliberate art curriculum. It inculcates, that a day is incomplete without art practice. The curriculum level has many levels from talent to assembly to Pradrashan to Arengetram stages. Enjoy their self-expression.

Creative Arts – development of imaginative and creative ideas, research and brain storming to refine creative ideas.

- (a) **Percussion:** Mridangam is an ancient instrument, a primary rhythmic accompaniment in Carnatic Music.
- (b) **Music:** Carnatic
- (c) **Drama:** Kinaesthetic and Empathetic understanding as well as an intellectual understanding.
- (d) **Dance:** Bharatnatyam
- (e) **Media art:** Improves reading skill , listening skill and speaking skill. Improves confidence and self-discipline
- (f) **Visual art:** Drawing, painting, sculpture, Design, and Craft.



LEADERSHIP



Knowing all about yourself

Values, Habits and Goal or motivation are by itself Leadership. Are you a leader by example? We would like you to develop this attribute.

Community service is also a leadership where you give back more than you get.



FOOD SERVICES – PANGEA CLUB MEMBERSHIP

Set in sylvan surroundings our cafeteria is ideally situated in the school campus. You can settle down to a healthy breakfast or order some delectable snack or tuck away a nutritious lunch. From a simple meal to a gastronomic one we will be happy to satisfy your taste buds. Our kitchen is well equipped to cook up any meal you order for in a jiffy. It also offers a wide range of snacks, hot and cold drinks as well as ice-creams.

With sports being such an integral part of our curriculum, every student of our College can choose a healthy breakfast for great sports performance every day. Each meal is well planned so as to give you the right balance of carbohydrates, proteins, fats vitamins, minerals and other nutrients

BREAKFAST MENU	
Days	Items
Monday	Idli/Chutney
Tuesday	Dosa/Aloo
Wednesday	Pongal
Thursday	Puri/Sagoo
Friday	Poha
Saturday	Upma
Sunday	Chapati
SNACK MENU	
Monday	Samosa
Tuesday	Kachori
Wednesday	Bread/Cheese
Thursday	Sandwich
Friday	Aloo Tikki
Saturday	Onion Samosa
Sunday	Paneer Cutlet
LUNCH MENU	
Monday	Sambar Rice/Papad
Tuesday	Veg Pulao/Raita
Wednesday	Noodles/Chapati
Thursday	Tomato Baath
Friday	Pudina Rice
Saturday	Vangi Bath
Sunday	Puliogere/Curd Rice
AFTER SCHOOL MENU	
Monday	Bread Bajji
Tuesday	Sweet corn
Wednesday	Biscuit/pea nut bar
Thursday	Juice
Friday	Fruits
Saturday	Sandwich
Sunday	Chips/Chocolates



FOREIGN STUDENT LANGUAGE CLASSES & INDIAN CULTURE

Improve all aspects of your English language skills and Indian Culture.

This course is structured to improve your overall English competency across the four skills - speaking, listening, reading and writing. You will also develop your ability to use English grammar, pronunciation and vocabulary with confidence and accuracy along with international spoken English with Accent Neutralization.

This is a full-fledged course aimed at anyone wanting to polish up his or her English language to an impressive and effective level. The carefully developed curriculum is structured to give the learners adequate proficiency in all the four language skills: listening, speaking, reading and writing with extra emphasis on conversational English proficiency with a neutralized accent.



Program Features

- Focus on important basic elements of pronunciation
- Interactive conversational practices & activities
- Focus on building vocabulary
- International styles and Expressions
- Program Curriculum
- Phonetics
- Grammar classes through discussions and drills

- Role plays
- Group Discussions & Topic talks
- Personality development tips
- Presentation and body language training

Program Duration & Fee

Duration: 1 months

Admission Processing Fee: Rs. 1,200/-

Course fee: Rs. 15,000/- *

In addition, Students need to pay an examination fee of Rs. 1500/- to NSDC through authorized partners & British Council.



DORMITORY

DORMITORY with food services: KENSRI DEGREE COLLEGE has established separate hostels for boys and girls in a secure residential neighborhood.

A full-fledged, well managed kitchen is attached to these hostels. Our chefs are known for their multi cuisine culinary talents. In-house wardens are the custodians of hostels who ensure smooth functioning of the hostels. Ragging is strictly prohibited in the hostel as well as in the college. Spacious dining halls are maintained within the premises to provide dining facilities to all the inmates of the hostels. Students have access to telephones within the hostel. Wardens are available in the hostel premises at all times to manage and take care of students.

Two to three students are accommodated in each room with attached bathrooms. Hostel rooms are well ventilated and adequately lit. Telephones with intercom / call transfer facilities are provided. Well-trained security staffs provide security to our hostel students 24 hours, round the clock. Each student is provided with a steel cot, study table, chair and cupboard.

Dormitory charge	
Advance	50000
Rent	7500
Food Veg	9000
Misc	1000
Total	17550

Dormitory charge	
Advance	50000
Rent	7500
Food non veg	13500
Misc	1000
Total	22000



Senior Secondary



Daily Child

TRANSPORTATION

1. Door to door transport facility will be provided for the pre- primary – II std students.
2. As per RTO our school buses are installed with CCTV, GPRS and lady attender. As per the availability of the number in the bus the students will be accommodated in a school bus. We believe in first come first service, students who are already travelling in school bus will be given priority.
3. Transport will ply on specified routes daily.
4. We request you to inform the transport manager if any change in address and phone numbers.
5. Transport to arterial routes will be provided during the evenings and weekends as per the requirement. Transport can be used only those who subscribe to school transport.
6. The school management will not be dealing with private transporter.
7. **Transport fee should be paid in two installment, the due dates will be 10th May and 10th November of the academic year. Payment by DD in favour of KENSRI TRANSPORT if it's not paid on time child will not be allowed to travel in the school transport**
8. Once the payment is cleared, the child will get a bus pass which has to be shown to the drivers at the time of boarding into the bus. The surprise checking will happen from the admin department, in case if we come to know the child is travelling without the bus pass will be charged . ₹100/- per time. The parents who are willing to clear the full year transport fee can be done and the bus pass will be is issued which is valid for the year.
9. Transport facility will be cancelled if the fees are not paid on time.



KENSRI TRANSPORT ROUTES LIST

- | | |
|-------------------|----------------------|
| 1. Vidyaranyapura | 2. Yelahanka |
| 3. Hebbal | 4. Kodigehalli |
| 5. Kempapura | 6. Sanjay Nagar |
| 7. CBI Road | 8. RT Nagar |
| 9. Kothanur | 10. Sahakar Nagar |
| 11. Thanisandra | 12. Hegde Nagar |
| 13. HBR Layout | 14. Kammanahalli |
| 15. Kasturi Nagar | 16. Ramamurthy Nagar |
| 17. Banaswadi | 18. Hennur Cross |
| 19. Malleshwaram | 20. MS Ramaiah |
| 21. Nagawara | |



SAFETY & SECURITY SYSTEM

Once a student comes into our facility they are viewed as our own.

A safe school provides a physical and social environment in which students are able to learn and achieve to their fullest capacity. A safe school environment also enables educators, administrators and other staff to support students in that pursuit without violence, the threat of violence or other safety concerns. KENSRI School aims to bring up the best of the safety and security system by monitoring the happenings in and around the campus through regular rounds by staff, the CCTVs and by professional security guards.

Safety

KENSRI School & college views policies of safety and security. All our Administration staff, sports coaches, school drivers and attenders are trained by professional in first aid administration and also how to treat and help unwell/ injured children. 'Suggestion/Complaint Box' to ensure that the concerns of students will be addressed by the Principal on a daily basis. Children's movement outside classrooms monitored by teachers and security personnel.



Security

Professional Services security guards at all gates

No unsupervised interaction between children & visitors within school campus

Parents/visitors entry restricted to the office area

Access to the school is limited. Access to school is only with prior appointments or permission sought through administrative office. Violators of this rule will be a negative mark to the students. Interaction between children and adults can happen during lunch time and when they leave the school and outside the school compound. There are two walls that are not completed as we are sorting out the boundaries with the BBA.



Identity cards

All children issued with a school ID card

School ID card worn by all students and school staff while at school

ID cards valid for one academic year only

Surveillance

Full school campus is under CCTV surveillance. Staff and student movement outside classroom is monitored, except in the personal areas, "bathroom". Our administrator also reviews at the end of the day for any peculiar movements during the day.



Safety on buses

Buses fitted with specified speed governors. Fire extinguishers and first aid kits present on every bus

Children looked after by trained lady attendants/Faculty. Provisions for GPS tracking and CCTV surveillance available.

Anti-Bullying

KENSRI School is committed to providing an educational environment for all students, employees, and volunteers that is safe and civil and free from harassment, intimidation or bullying. Harassment, intimidation or bullying (HIB) behaviors refer to any gesture, any written, verbal, cyber or physical act, that is reasonably perceived as being motivated either by any actual or perceived characteristics, such as race, color, religion, ancestry, national origin, gender, sexual orientation, gender identity and expression, or a mental, physical or sensory disability, or by any other distinguishing characteristics, whether or not the act occurs on or off school grounds that has the effect of substantially disrupting or interfering with the orderly operation of the school or the rights of other students and that:



A student victim, the parent/guardian of a student victim, a close adult relative of a student victim, or a school staff member who wishes to report an incident of alleged harassment, intimidation, or bullying, must write a note in the School Annual diary and get it to the notice of the SDS.

In cases where the administration determines that an act has occurred, counseling, corrective discipline will be used to change the behavior of the perpetrator and remediate the impact on the victim. False reports or retaliation for harassment, intimidation or bullying will also result in disciplinary action.

Dropping off Items for Children

- If your child forgets to bring something to school, you will still be able to drop off the item. However, entry into the school for the sole purpose of dropping off an item will be prohibited.
- Please write the child's name and Class, and section on the item, and it will be collected from you in the vestibule and secured at a table with the security monitor, who will ensure that the item is delivered.
- The item will be delivered by a staff attender.

Website Complaint Form

Please complete this online form if you wish to express a concern relating to campus safety, campus security or a guard. The form will be directed to the Director of Safety and Security. Your name and contact information is required in the event that further information is needed.

FUN EVENTS

- INTERNATIONAL FUN TRIP



- DIWALI CELEBRATION



- KENFEST - Inter college competitions



- GRADUATION DAY



SUMMER CAMP

Change of school is difficult for a child. We make sure children feel comfortable with the physical facilities of our school. Coming to summer camp is the one way to become comfortable. There is a highly likelihood that the students of the school could also be coming to school where your children make a new friend in the new school.

ATHLETE CHOICES



Yoga



Athletics



Tennis



Swimming



Badminton



Cricket



Soccer



Volleyball



Basket ball

ARTIST CHOICES



Percussion



Dance



Drama



Media art



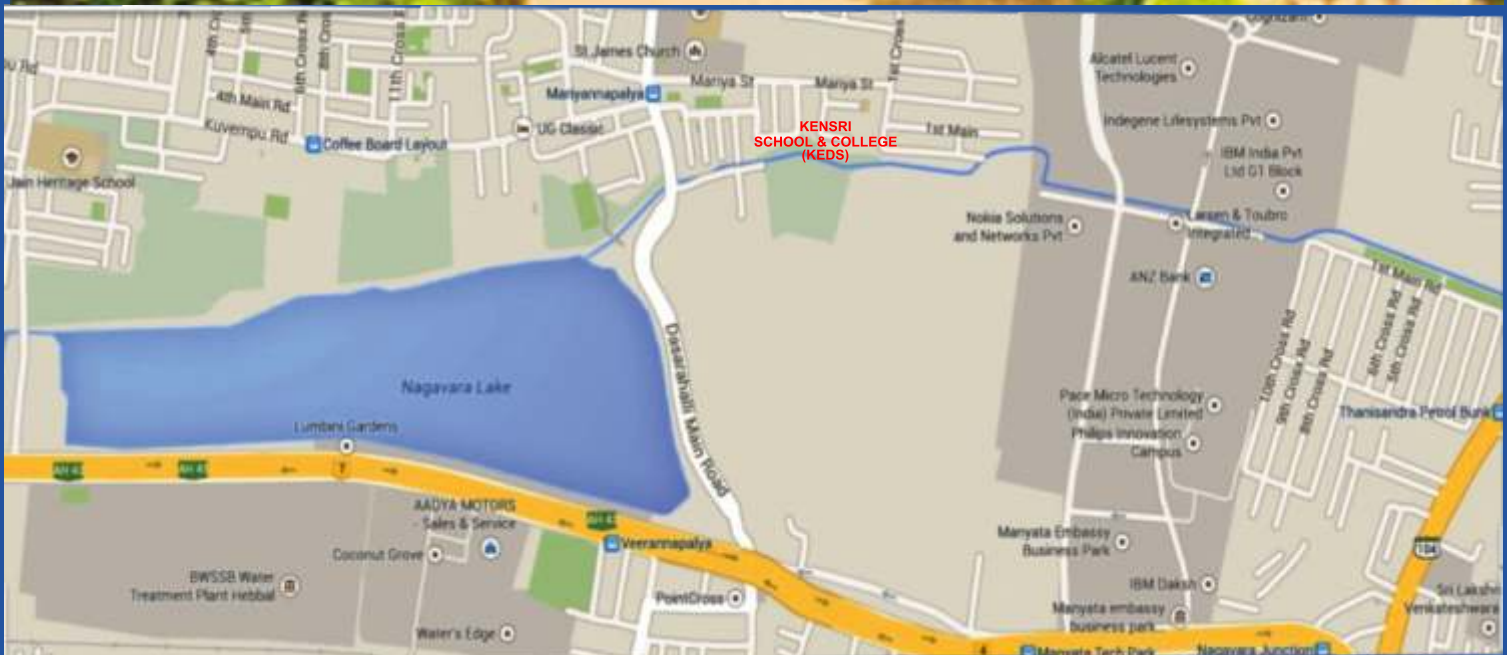
Visual art



Carnatic music



Flute



Route Map to KENSRI School & College

#1348/444A, Mariya Street, Mariyannapalya,
Bangalore - 560024. Ph - 080 - 22026000
email - admin@kensri.in
Website - www.kensri.in